

MOUNTAIN VIEW POLICE DEPARTMENT ANNUAL REPORT 2018



MESSAGE FROM THE CHIEF	2
AT-A-GLANCE	3
DEPARTMENT OVERVIEW	4
TRAFFIC.....	11
ACTIVITY OVERVIEW	13
COMMUNITY ENGAGEMENT	20

MESSAGE FROM THE CHIEF

This annual report highlights data and programs for the City of Mountain View's Police Department in the areas of crime, traffic safety, and community engagement. In 2018, the Mountain View community experienced positive and negative changes in crime and safety. There were reductions in the violent crime rate, injury and fatal collisions, and in overall reported crime, but the property crime rate is still increasing at a concerning rate, most notably with motor vehicle thefts and auto burglaries.

The men and women of the Mountain View Police Department continued their commitment to our priorities of safety, working effectively with people, and delivering results through good police work. They met challenges with handling nearly 35,000 calls for service, conducting outreach to homeless and people living in vehicles, and participating in department and city events that engaged the public in learning about our services and operations. We also began the process of regulating cannabis businesses and made arrests for complex crimes and high profile cases involving serious assaults, human trafficking, and an organized theft ring. Our men and women continued to recruit and hire highly qualified staff, implemented new technology, and completed training that expanded our crisis intervention, employee wellness, and mindfulness skillsets.

In 2018, we continued to expand our engagement portfolio with the Speaker Series, Podcasts, the inaugural Women's Day event, Rape Assault Defense courses, as well as our signature events for Coffee with a Cop, Document Shred and Drug Takeback, National Night Out, Cops and Gobblers in partnership with the Police Officers Association, Cops that Care, and Shop with a Cop program. Our partnership with the Police Activities League served youth in programming for tennis, boxing, and mentoring. We continue to offer the award-winning Dreams and Futures youth summer program, provide career learning experiences for teens, and our award winning staff continues to deliver state-of-the-art outreach and engagement through social media that is a national model for best practices.

The men and women of your Police Department work relentlessly to provide exceptional service. Please take a moment to thank a member of your Police Department for the great work they do to keep our community safe. Their collective accomplishments and dedication are truly commendable. I am proud to highlight their accomplishments in the 2018 Annual Report.



AT-A-GLANCE



Mission	Keeping Mountain View safe and tackling crime through quality policing that secures the trust and support of the people we serve and protect.
Values	Exceptional Service Integrity Respect
Priorities	Safety People Results

Population: 80,800 Total Calls For Service in 2018: 34,962

Per Day:	Citations	Crimes Reported	Arrests	Dispatched Calls For Service	Police Reports Taken
	8.31	13.07	5.35	50.6	22.8

Since 2017...



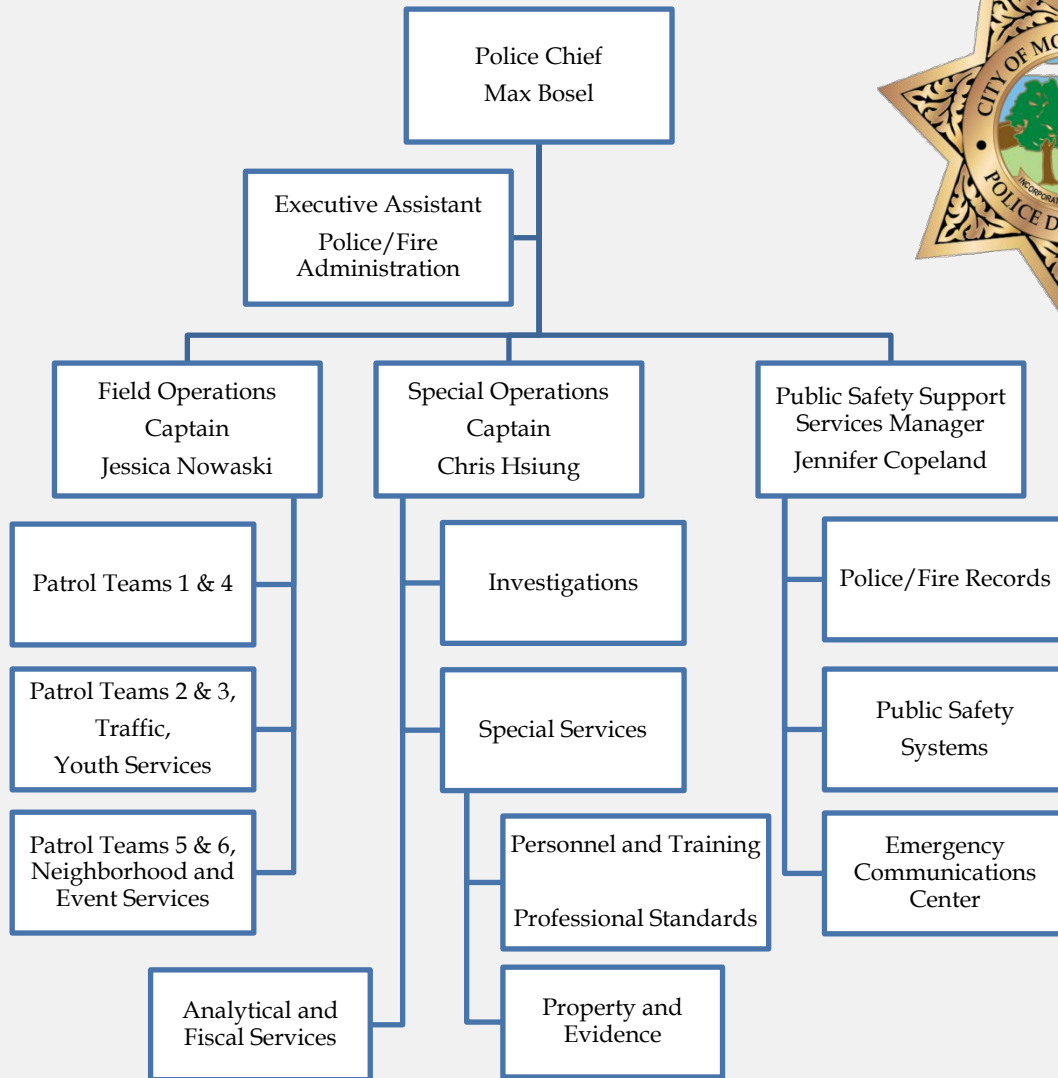
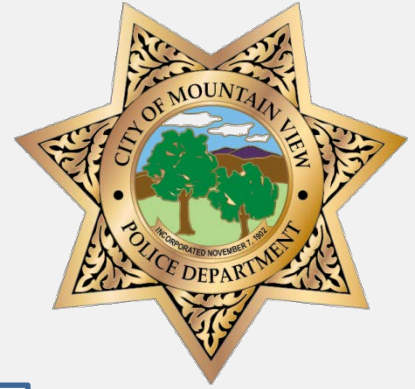
Violent Crimes
12.8%

Property Crimes
6.8%

Reported Crime
4%

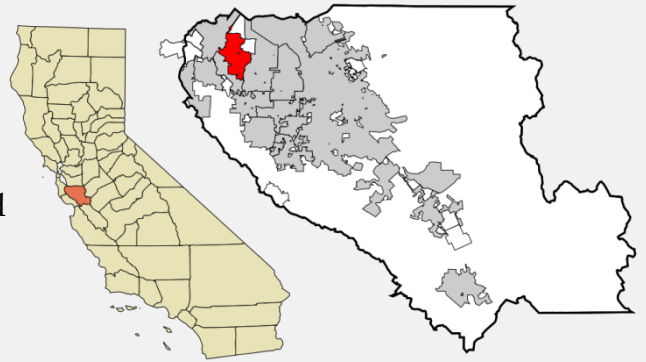
Injury and Fatal Collisions
13%

DEPARTMENT OVERVIEW

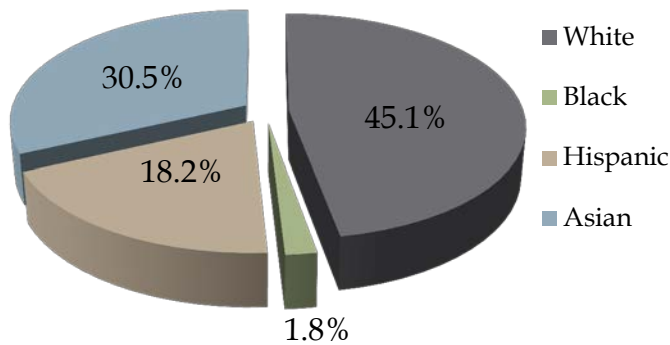


Personnel Demographics

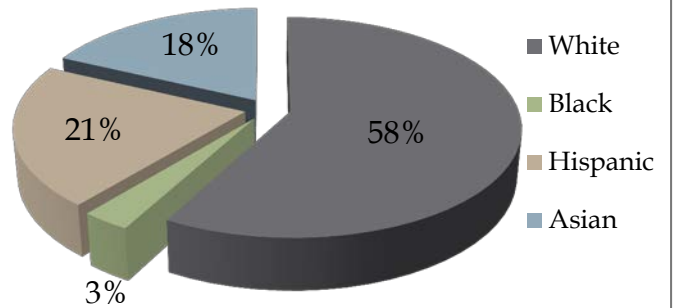
Located within Santa Clara County, with a City population over 80,000, the Mountain View Police Department employed 148 full, regular and limited period positions with a budget of just over \$40.9 million in 2018.



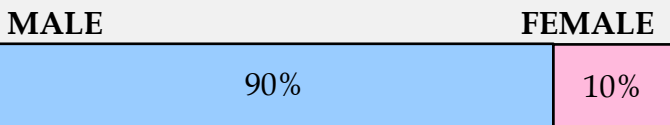
City of Mountain View



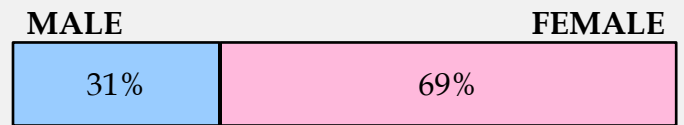
MVPD Personnel Total



SWORN STAFF



NON-SWORN STAFF



Budget

DEPARTMENT DIVISIONS	2016-17 ACTUAL	2017-18 ADOPTED	2018-19 ADOPTED
Police Administration	\$ 1,200,270	1,223,769	1,281,775
Field Operations	17,934,270	20,111,510	21,064,443
Special Operations	8,724,773	9,547,648	10,224,793
Public Safety Support Services	6,323,939	7,902,166	8,369,279
TOTAL EXPENDITURES	\$ 34,183,252	38,785,093	40,940,290
	2016-17	2017-18	2018-19
EXPENDITURE SUMMARY	ACTUAL	ADOPTED	ADOPTED
Salaries Wages and Benefits	\$ 31,138,538	35,213,064	37,261,054
Supplies and Other Services	2,246,442	2,450,162	2,549,640
Capital Outlay	147,542	355,967	376,596
Interfund Expenditures	650,730	765,900	753,000
TOTAL EXPENDITURES	\$ 34,183,252	38,785,093	40,940,290
	2016-17	2017-18	2018-19
FUNDING SOURCES	ACTUAL	ADOPTED	ADOPTED
General Operating	\$ 33,877,641	37,283,718	39,239,658
General Non-Operating	53,178	1,176,467	1,320,674
Police Asset Forfeitures	2,937	0	0
Supplemental Law Enforcement Services	153,043	175,000	175,000
Shoreline Regional Park Community	40,000	40,000	77,000
Wastewater	56,453	109,908	127,958
TOTAL FUNDING	\$ 34,183,252	38,785,093	40,940,290
	2016-17	2017-18	2018-19
REVENUE SUMMARY	ACTUAL	ADOPTED	ADOPTED
General Licenses & Permits	\$ 104,528	104,500	101,170
Fines & Forfeitures	672,104	621,400	653,900
Local Intergovernmental Revenue	216,511	175,000	182,000
State Intergovernmental Revenue	385,146	215,000	140,000
Federal Intergovernmental Revenue	38,296	0	0
General Service Charges	158,538	142,740	171,650
Miscellaneous Revenue	1,377,380	707,820	757,300
Interfund Revenue Transfers	193,600	0	0
TOTAL REVENUES	\$ 3,146,103	1,966,460	2,006,020

CRIME

Mountain View remains an overall safe community. The total number of reported crimes in Mountain View decreased by 4%. Still, our city remains exposed to crime trends that are being experienced throughout the Bay Area and throughout our state.

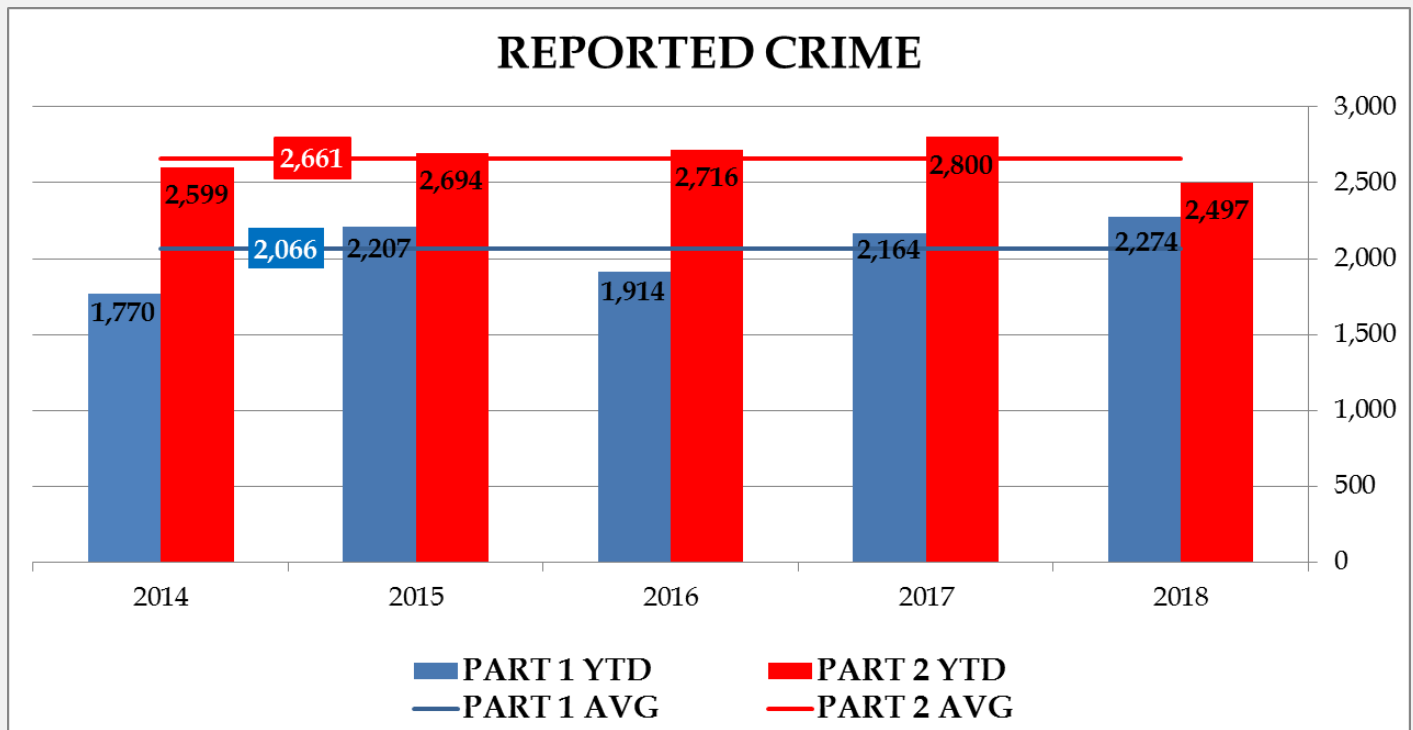
MONTHLY RECAP - REPORTED CRIME			
CLASSIFICATION	2018 YTD	2017 YTD	CHANGE
PART I			
CRIMINAL HOMICIDE	0	1	-100%
FORCIBLE RAPE	13	11	18%
RAPE - FBI REVISED DEFINITION	7	3	133%
ROBBERY	59	44	34%
AGGRAVATED ASSAULT	85	129	-34%
BURGLARY [1]	276	275	0%
LARCENY [2]	1,659	1,593	4%
MOTOR VEHICLE THEFT	168	102	65%
ARSON	7	6	17%
PART I TOTAL	2,274	2,164	5%
[1] BURGLARY INCLUDES:			
RESIDENTIAL	131	154	-15%
COMMERCIAL	145	123	18%
[2] LARCENY INCLUDES:			
AUTO BURGLARY OVER \$400	381	370	3%
AUTO BURGLARY UNDER \$400	244	188	30%
OTHER THEFT OVER \$400	452	440	3%
OTHER THEFT UNDER \$400	583	595	-2%
PART II			
SIMPLE ASSAULT	335	342	-2%
FORGERY	17	24	-29%
FRAUD	117	159	-26%
EMBEZZLEMENT	3	8	-63%
STOLEN PROP - BUY/POSS/REC	22	23	-4%
VANDALISM	143	165	-13%
WEAPON - CARRY/ POSSESS	39	47	-17%
PROSTITUTION/ VICE	1	0	0%
SEX OFFENSE	68	63	8%
DRUG ABUSE	271	355	-24%
OFFENSE AGAINST FAMILY & CHILD	23	21	10%
D U I	254	278	-9%
LIQUOR LAWS	2	4	-50%
PUBLIC INTOXICATION	245	306	-20%
DISORDERLY CONDUCT	8	19	-58%
CITY ORDINANCE	236	211	12%
OTHER OFFENSES	713	775	-8%
PART II TOTAL	2,497	2,800	-11%
GRAND TOTAL	4,771	4,964	-4%

The number of reported incidents of violent crime (criminal homicide, forcible rape, aggravated assault and robbery) decreased by 12.8%. While the number of robberies, predominantly strong arm, increased by 34%, a similar percentage drop in aggravated assaults was a primary cause in the overall decrease.

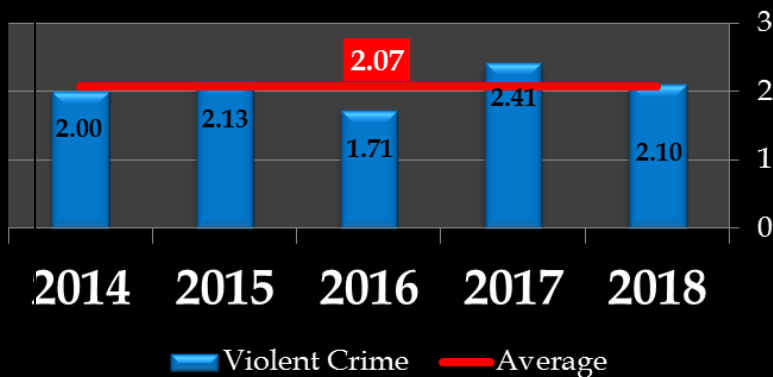
The most prevalent crime issue remains property crimes, in particular theft from vehicles, which continues to be called a crime problem statewide. There has also been an increase in commercial burglaries, but a modest decrease in residential burglaries. The total number of property crimes (burglary, larceny and motor vehicle theft) increased by 6.8%.

We are mindful that these statistics do not represent the impact, emotionally and financially, that they have on their victims. It is for this reason we continue to be committed to being relentlessly proactive in the efforts to prevent crime and bring offenders to justice.

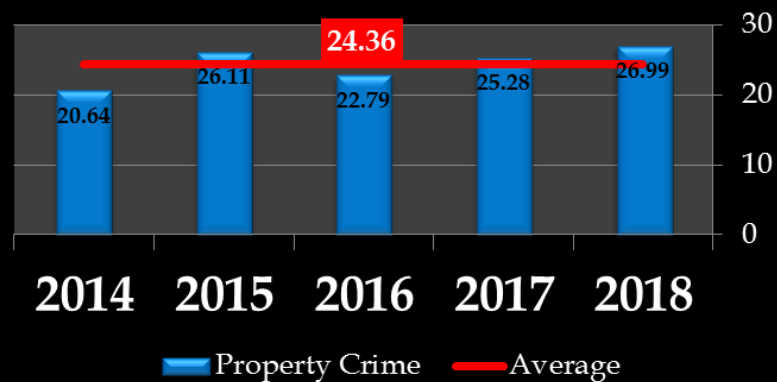
Five Year Trends



VIOLENT CRIME INDEX



PROPERTY CRIME INDEX

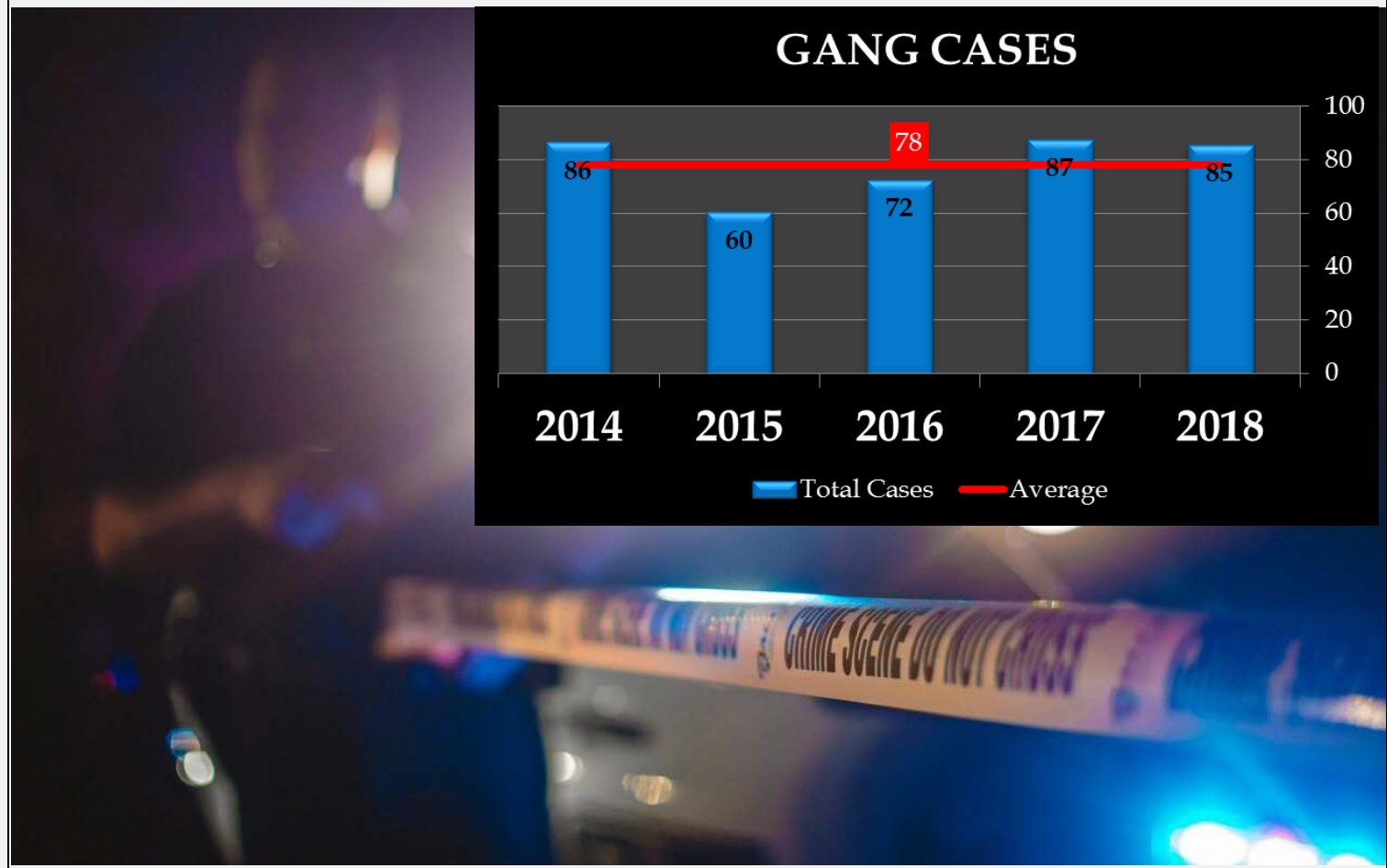


Violent Crime Index

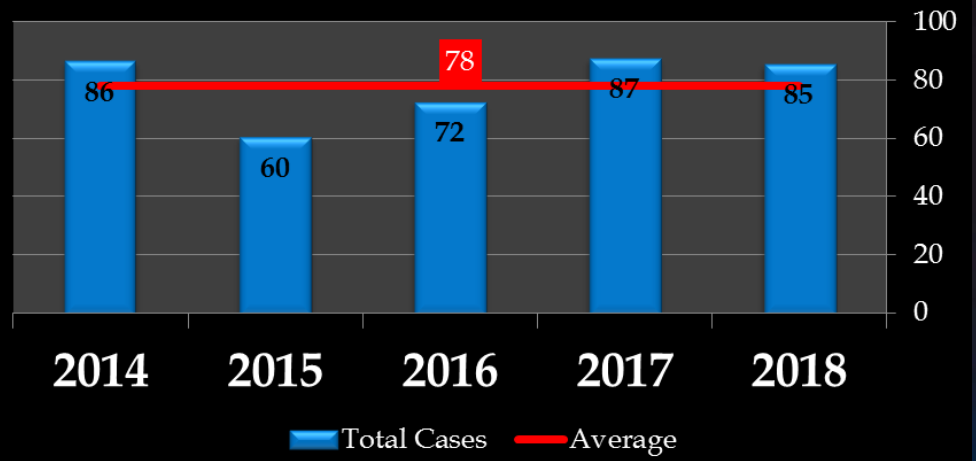
The Violent Crimes index includes Criminal Homicide, Forcible Rape, Rape - FBI Revised Definition, Aggravated Assault and Robbery.

Property Crime Index

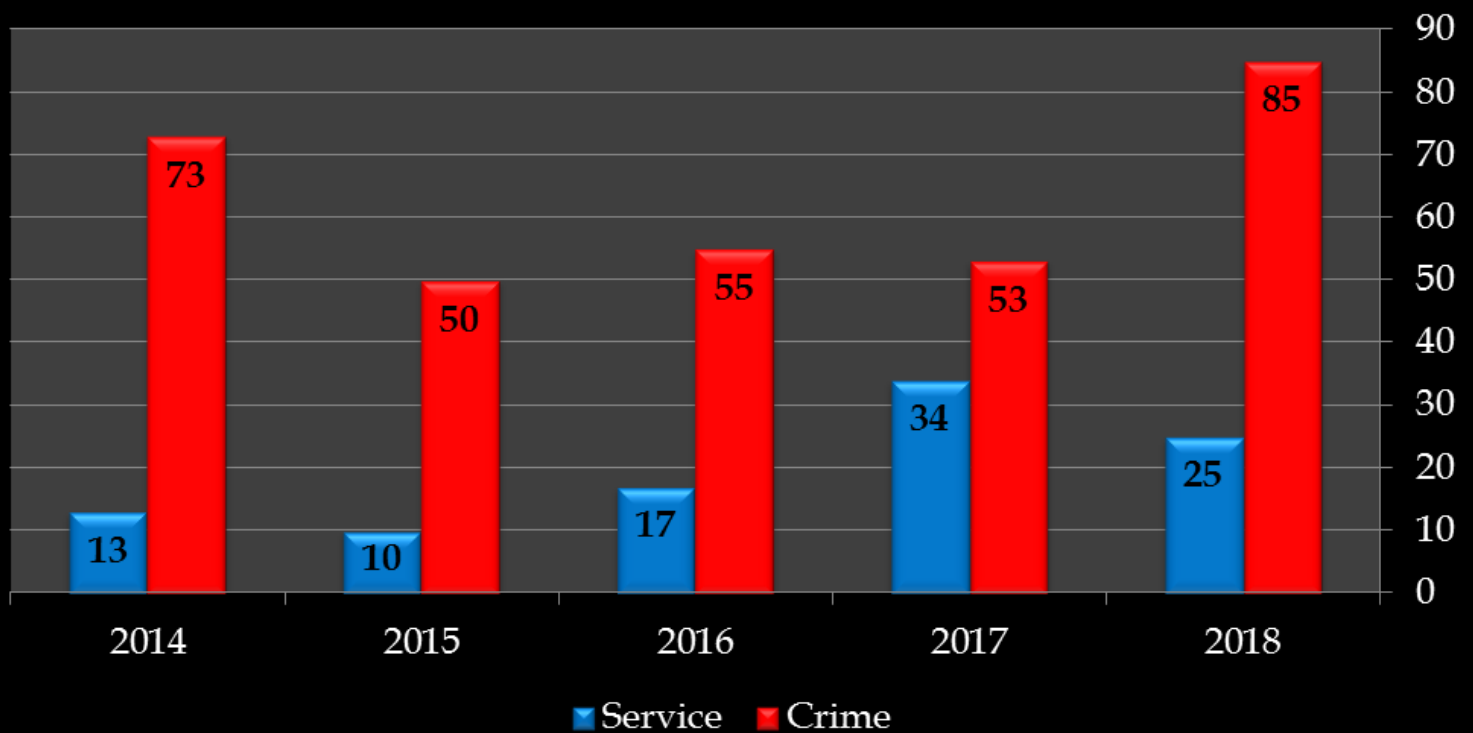
The Property Crime Index includes Burglary, Larceny and Motor Vehicle Theft.



GANG CASES



GANG SERVICE VS. CRIME REPORTS



Arrests and Clearances

CLASSIFICATION	2018 YTD	2017 YTD	% CHANGE
<u>CLEARANCE RATE</u>			
VIOLENT CRIME	60%	41%	19%
PROPERTY CRIME	10%	11%	-1%
CLEARANCE RATE TOTAL	13%	14%	0%
<u>ARRESTS</u>			
ADULT FELONY	347	353	-2%
ADULT MISDEMEANOR	1177	1465	-20%
WARRANTS/HOLDS	331	355	-7%
ADULT TOTAL	1855	2173	-15%
JUVENILE FELONY	39	22	77%
JUVENILE MISDEMEANOR	58	88	-34%
WARRANTS/HOLDS	1	10	-90%
JUVENILE TOTAL	98	120	-18%
ARRESTS GRAND TOTAL	1,953	2,293	-15%
<u>ARREST RATE</u>			
FELONY	4.95	4.81	3%
MISDEMEANOR	15.85	19.93	-20%
WARRANTS/HOLDS	4.26	4.68	-9%
ARREST RATE TOTAL	25.07	29.43	-15%

Population

Based on data from the State of California Department of Finance Demographic Research Unit. (<http://www.dof.ca.gov/research/demographic/>). The population basis is recorded on the Monthly Recap page.

Clearance Rate

A clearance rate is the percentage of crimes reported that have been cleared. A clearance rate is calculated by dividing the number of crimes cleared by the number of crimes reported; the result is multiplied by 100. For example, if there were 35 robberies cleared and 78 robberies reported. This equals a clearance rate of 44.9%

Arrest Rate

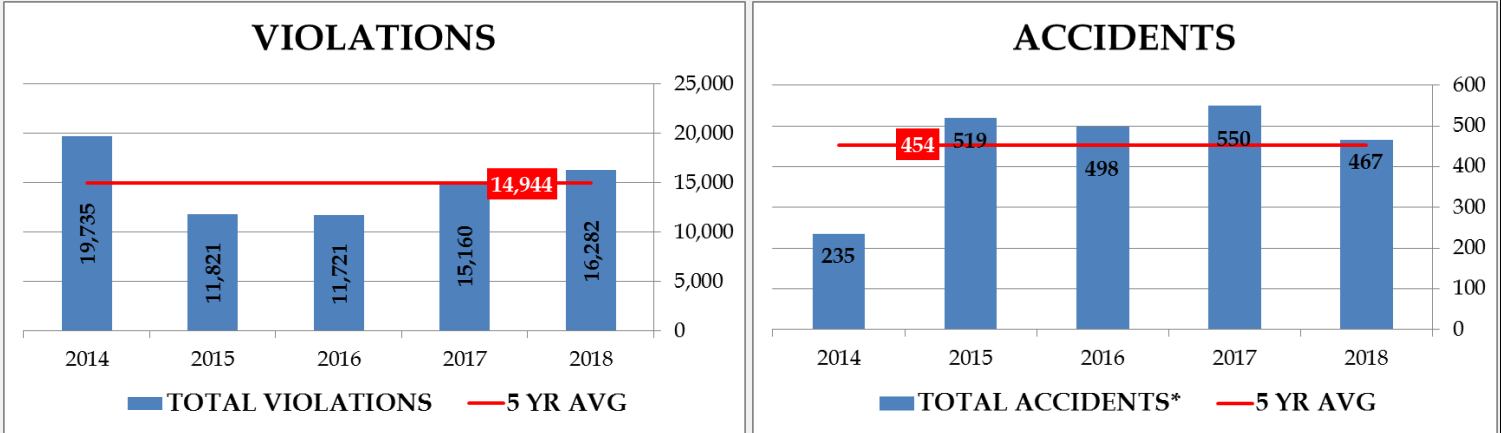
An arrest rate describes the number of arrests made by law enforcement agencies per 1,000 total population. An arrest rate is calculated by dividing the number of reported arrests by the respective population; the result is multiplied by 1,000. For example, if there were 2,500 total felony arrests and the total population was 73,000, the arrest rate is 34.25. The state factors the rate based on 100,000 population. To compare the MVPD rate to the state, multiply the MVPD rate by 100. Note that this is an inflated rate from the actual rate per population. MVPD does not calculate the arrest rate for the population at-risk (ages 10-69).

TRAFFIC

In 2018, the Police Department focused our traffic related efforts on education, engagement, engineering and enforcement. We have continued the Alive at 25 Program for traffic offenders between 16 and 25 years of age. Our social media outreach included educational content along with enforcement notifications. The Traffic Unit continues to work closely with the Traffic Engineering Division to identify and correct issues at problem intersections. Our enforcement efforts remained at a consistent level compared to 2017. We saw decreases in injury, non-injury, and private property accidents this year. Traffic continues to be an important focus for the entire Police Department as we continue to work to make our streets safer for the community.



5 Year Trends



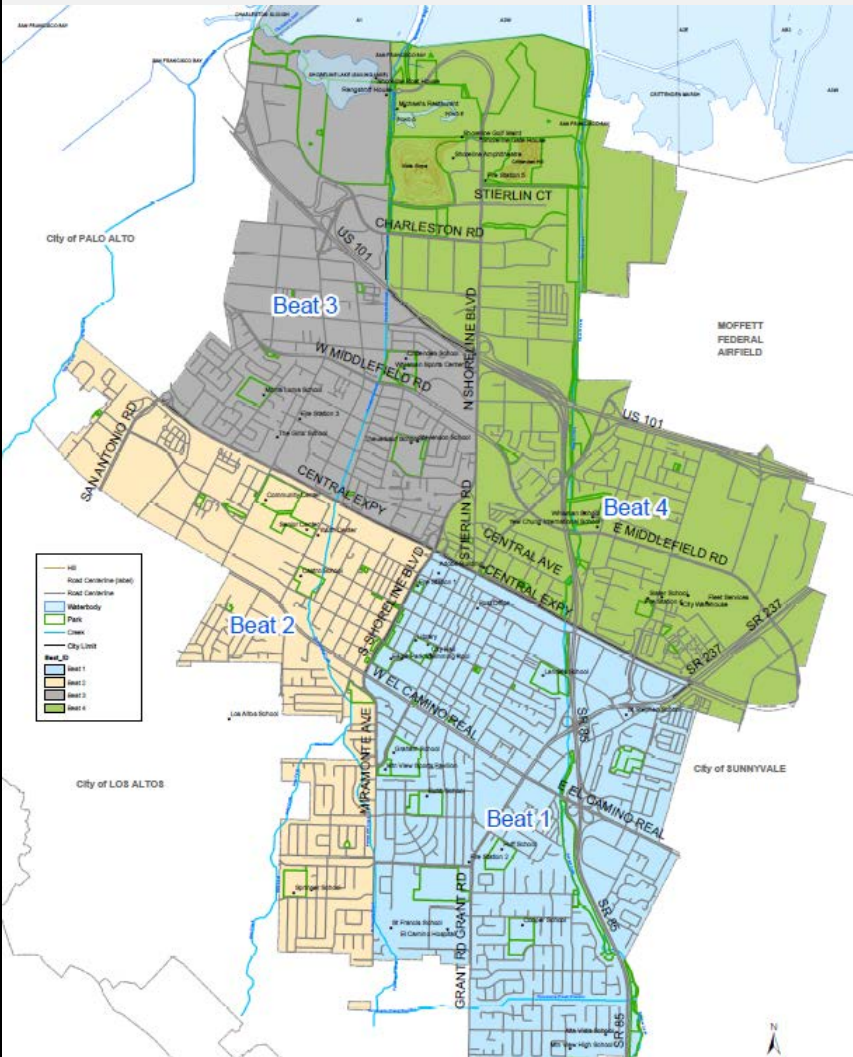
*In 2015, the traffic collision reporting procedure changed to be consistent with the Statewide Integrated Traffic Reporting System.



ACTIVITY OVERVIEW

Calls for Service

Response Time = the time interval of the First Unit Dispatched to First Unit Arrival for Emergency and "Priority 1" Calls For Service.



<u>Dispatched Calls by Beat</u>	
Beat 3: 3,186	Beat 4: 3,197
Beat 2: 5,107	Beat 1: 6,860
Out of City: 118	TOTAL: 18,468

<u>Officer Initiated Calls by Beat</u>	
Beat 3: 2,950	Beat 4: 3,161
Beat 2: 3,858	Beat 1: 5,631
Out of City/Unspecified: 894	
TOTAL: 16,494	

<u>Response Time by Beat (in minutes)</u>			
Average		Median	
Beat 3: 17.0	Beat 4: 15.8	Beat 3: 9.2	Beat 4: 8.7
Beat 2: 16.0	Beat 1: 16.2	Beat 2: 8.6	Beat 1: 9.2
ALL: 16.2		ALL: 9.0	

2016: The response time was 4 minutes or less 44.7% of the time (659 of 1,472 events)

2017: The response time was 4 minutes or less 54.4% of the time (836 of 1,536 events)

2018: The response time was 4 minutes or less 57.9% of the time (818 out of 1,412 events)

Neighborhood and Event Services

The Neighborhood Event Services (NES) unit is a community outreach and public education unit. In 2018, NES has conducted over 60 community outreach events. These events include Coffee with a Cop, Crime Prevention Meetings, Neighborhood Association Ice Cream Socials, police department tours, Drug Take-Back, Shred Event, and school visits.

In an effort to respond to the growth of the homeless population, a Community Outreach Officer (COO) position was approved by City Council and assigned to NES. The COO position started in July 2017 and was tasked with contacting and assisting our homeless population. The COO helps connect county-wide social service groups with this vulnerable population. Since its inception, NES has identified 559 homeless subjects who have had some type of incident or contact by MVPD. The COO has contacted 385 of these 559 homeless subjects, providing outreach, service information, and connecting many to the Community Services Agency (CSA).

In 2018, over 55 large encampments were located throughout the city and the occupants of the camps were provided direct access to services and offered to be taken to a shelter. In some of the encampments, officers also located narcotics, narcotics paraphernalia, stolen property, garbage, and human waste. Arrests were made as appropriate.

Numerous contacts were also made with people living in vehicles. Many of these contacts resulted in referrals to services; some resulted in narcotics-related arrests, warrant violations, and the recovery of guns. Throughout 2018, the COO worked directly with the Palo Alto Review/Recovery Court (PAR Court) to ensure those who were arrested and met the PAR Court requirements were provided a voice and access to recovery services.

NES, in partnership with the Santa Clara County District Attorney's Office, created the Community Outreach Association (COA). The COA is a group that networks homeless outreach officers within Santa Clara County to each other and provides training on various topics related to homelessness. This association allows for dialogue and problem-solving discussions related to vehicle dwelling, encampments, mental health training, and homelessness-related issues in general. The association meets bi-monthly and has the majority of law enforcement agencies in Santa Clara County in attendance.



NES has partnered with Community Cycles of California, which is a non-profit organization that helps employ, give vocational training, and gives bicycles to those in need. MVPD has donated over 200 unclaimed bicycles to this organization, where the bicycles are repaired and sold to help fund salaries for the homeless employees.

Contact Demographics

Race/Ethnicity - U.S. Census	2010 Census	2018					
		Victims	Witnesses	Suspects	Arrests	Citations	All Contacts
White	56.0%	43.97%	37.14%	31.55%	31.15%	29.75%	35.55%
Asian	26.0%	25.57%	13.33%	12.14%	8.45%	34.51%	23.87%
Hispanic or Latino	21.7%	23.79%	40.14%	41.99%	47.87%	24.02%	30.40%
Black or African American	2.2%	3.79%	5.85%	12.26%	10.63%	4.05%	5.83%
Native American, Native Alaskan	0.5%	0.11%	0.00%	0.00%	0.18%	0.39%	0.20%
Native Hawaiian, Pacific Islander	0.5%	1.28%	1.63%	1.33%	0.82%	0.18%	0.88%
Other not reported on Census	N/A	1.49%	1.90%	0.73%	0.91%	7.09%	3.28%
TOTAL	74,066	2,745	735	824	1,101	2,793	8,198

The analyzed data aggregates Police Department race/ethnicity reporting categories into US Census categories. Race or ethnicity is reported for involved parties listed on incident reports and citations. Contacts where race was unknown or left blank (such as in some cases reported by the public on the Internet), were not included in the totals. Victim contacts do not include businesses. The race or ethnicity for suspects can be for named individuals or for unknown suspects described by victims or witnesses. Arrests include persons arrested on criminal charges, warrants, and probation/parole holds. The "All Contacts" category includes parties classified as "Other," which is not reported separately in the table.

RACE	2010 Census	2018					
		Victims	Witnesses	Suspects	Arrests	Citations	All Contacts
White	56.0%	1,207	273	260	343	831	2,914
Asian	26.0%	702	98	100	93	964	1,957
Hispanic or Latino	21.7%	653	295	346	527	671	2,492
Black or African American	2.2%	104	43	101	117	113	478
Native American, Native Alaskan	0.5%	3	0	0	2	11	16
Native Hawaiian, Pacific Islander	0.5%	35	12	11	9	5	72
Other not reported on Census	N/A	41	14	6	10	198	269
TOTAL Number	74,066	2,745	735	824	1,101	2,793	8,198

Professional Standards

PERSONNEL COMPLAINTS

Sustained	0
Unfounded	6
Not Sustained	0
Exonerated	2
No Finding	2
Pending	0
TOTAL	10

COMMENDATIONS

Officers 23
 Awards 31
 Some officers received multiple letters of recognition.

PURSUIITS

Initiated	4
Apprehended	3
Collisions	0
Injuries	
Suspects	0
Citizens	0
In Policy	4
Not in Policy	0

In 2018, force was used on 23 individuals for a total of 26 uses of force (in some cases, more than one type of force was used on one person). In 2017, force was used on 15 separate individuals.

All incidents of force used are reviewed by the department's chain of command.

USE OF FORCE

Type of Force	Injury					Total
	None	Minor	Moderate	Major	Fatality	
Control Hold	0	0	0	0	0	0
Personal Weapon	4	2	0	0	0	6
Uncontrolled Takedown	4	7	0	0	0	11
OC (pepper spray)	0	0	0	0	0	0
Baton / Bean Bag Round	0	1	0	0	0	1
CED* (Taser)	2	6	0	0	0	8
K-9	0	0	0	0	0	0
Ramming with Vehicle	0	0	0	0	0	0
Carotid Restraint	0	0	0	0	0	0
Firearm	0	0	0	0	0	0
TOTAL	10	16	0	0	0	26

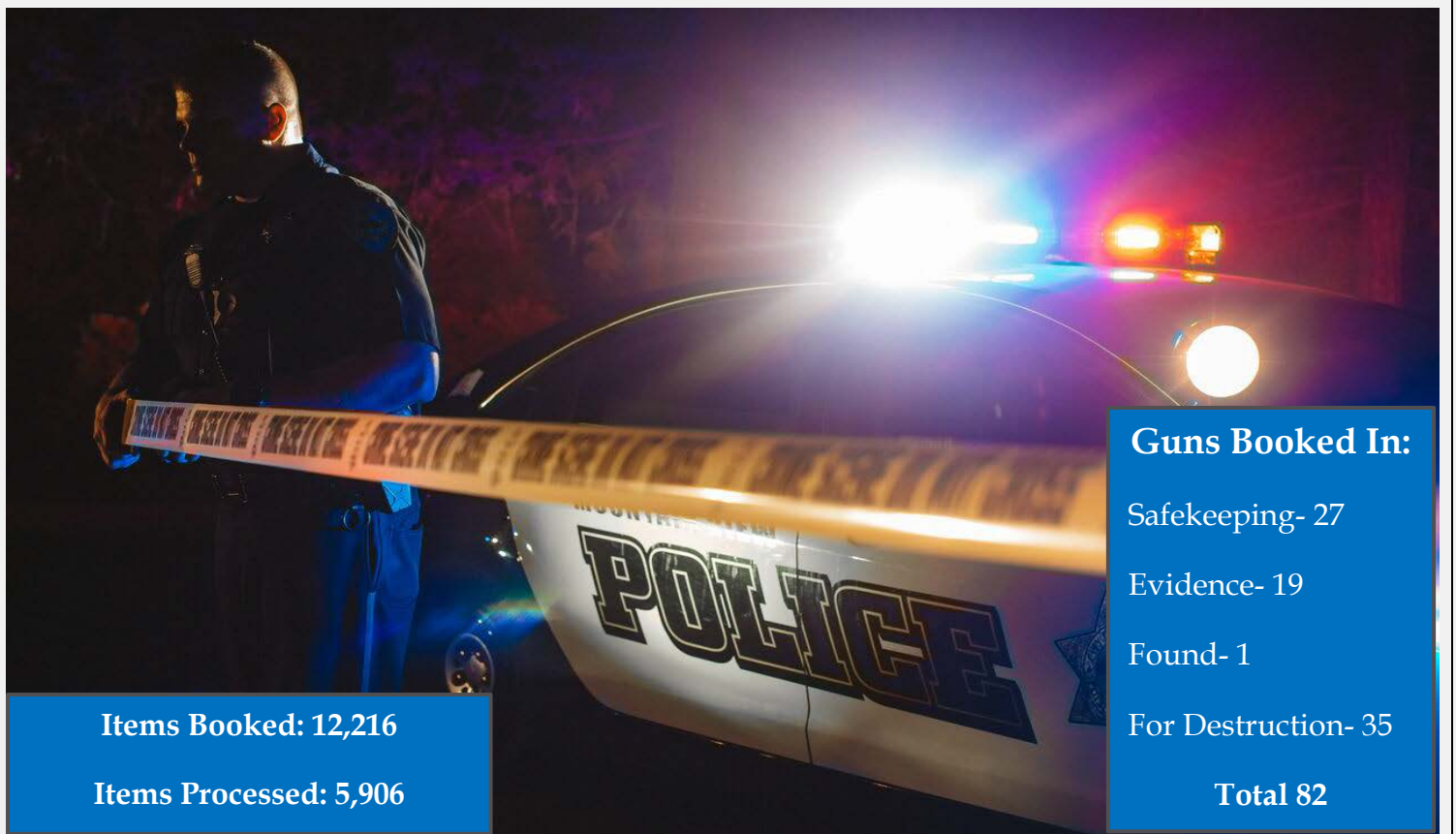
Data Entry



Case Reports: 8,319
Cases Filed with DA: 1,444
Citations: 3,034
Field Interview Cards: 332
Warrants: 789

Sex Offenders:
Registrants- 51
Violations- 8

Property and Evidence



Items Booked: 12,216
Items Processed: 5,906

Guns Booked In:
Safekeeping- 27
Evidence- 19
Found- 1
For Destruction- 35
Total 82

SWAT



1 Callout:
High Risk Search
Warrant Service

Concerts and Special Events



38 concerts at Shoreline Amphitheatre
and 79 special events city-wide.



The MVPD K9 Unit is one of the longest serving K9 Units in Santa Clara County. Teams strive each and every day to keep our community safe, and this year, we are proud to announce the addition of a new K9 Handler team to the unit, Officer Brandon Erickson and his partner, K9 Ares.

Throughout 2018, our three patrol K9 teams assisted both MVPD officers and allied agencies in locating missing people and hiding suspects, sniffing out drugs, and finding evidence. For example, one night, a subject was found hiding while police searched a multi-level building under construction. Earlier, that subject was seen jumping over a perimeter fence by a security company who called police. They were quickly found by our K9 on the second floor of the building and taken into custody.

In another instance, we assisted a neighboring agency who located an abandoned vehicle involved in a pursuit. Our K9 team not only searched the area, they tracked a suspect to a side gate of a nearby residence, where the suspect was found and arrested.

In addition to all the patrol work they do, our K9 teams also visited several schools throughout the year and participated in several community events such as Coffee with a Cop, National Night Out, and neighborhood meetings.

HIGHLIGHTS

- 464 Deployments
- 23 Narcotics searches
- 4 Narcotic finds
- 18 Suspects located
- 51 Outside agency assists
- 584 Training hours



COMMUNITY ENGAGEMENT

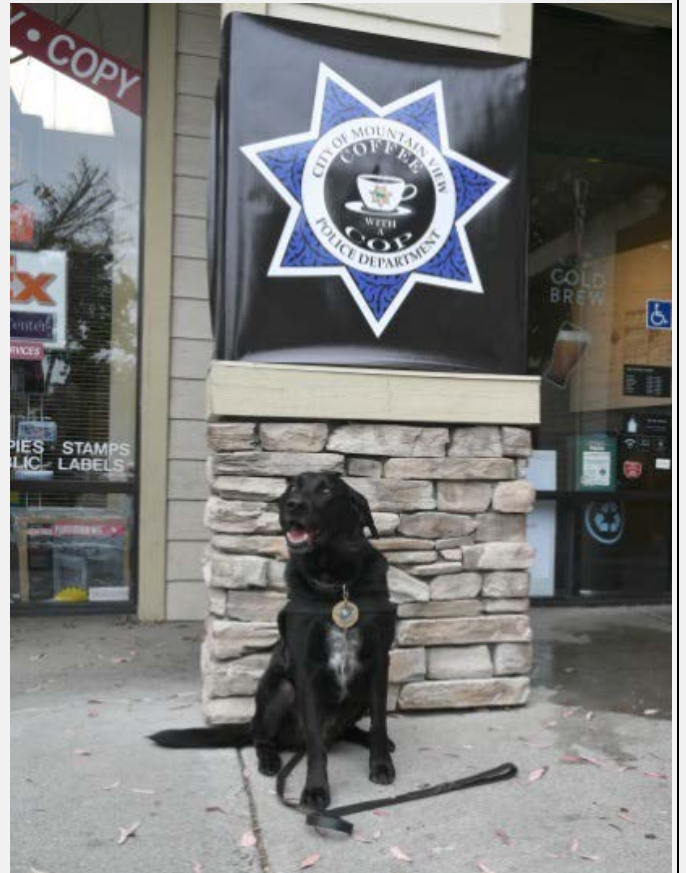
Neighborhood and Event Services



COMMUNITY EVENTS

60+!

- National Night Out
- Linked In Event
- Coffee with a Cop
- MVFD Fun Run
- MVFD Pancake Breakfast
- CMV Trailblazer Race
- Women’s Day event
- Halloween Bag Distribution
- Job Shadow Day
- RAD classes
- Shred/Drug Take Back event
- Shop with a Cop
- CMV Spanish Leadership Academy
- Leadership Mountain View Public Safety Day





COMMUNITY AND SCHOOL PRESENTATIONS



PINK PATCH PROJECT

Raising awareness for
breast cancer



MOVEMBER

Promoting men's health with a
No-Shave November



LAW ENFORCEMENT TORCH RUN FOR THE SPECIAL OLYMPICS

Women's Day

See Strong, Be Strong



This inaugural event invited women and girls to learn more about the Mountain View Police Department and public service career opportunities. In addition to interacting with the women of MVPD, activities and displays from the Police, Fire and other city departments were on hand for a unique, interactive experience.





**22nd annual
Cops & Gobblers**

Thanksgiving food drive benefiting
needy families in our community





16th annual Cops that Care
Helping underprivileged and low-income families have a happy holiday



MOUNTAIN VIEW PAL POLICE ACTIVITIES LEAGUE

PAL Boxing:	40 students
NetGain Tennis:	12 students
PAL Mentoring Program:	20 students

Mountain View PAL was formed to help bring youth under the supervision and constructive influence of responsible adult role models, including police officers, through a variety of sports, educational, and recreational activities. The goal of the program is to serve as an effective and powerful antidote to juvenile delinquency. Active participation should impact desirable educational, social and personal values; development of a positive self-image; learning of successful interpersonal skills and other life skills that mitigate against the occurrence of juvenile delinquency. In 2018, we provided students with PAL programs like PAL Boxing and Net Gain Tennis as well as the PAL Mentoring Program. PAL Boxing increased the student participation by 10 students and added another volunteer coach.





us on Social Media



Facebook followers
increased 5.9% to
19,742

@mountainviewpolicedepartment



Instagram followers
increased 16.1% to
3,801

@mountainviewpd



Twitter followers
increased 11.8% to
22,012

@mountainviewpd



Nextdoor followers
increased 24.8% to
23,310



Snapchat views
increased 4.3% to
460



CONTACT INFORMATION

1000 Villa Street

Mountain View, CA 94041

(650) 903-6344

Narcotics hotline (650) 961-5800

Walk-in Crime Reports 7 days a week

7 a.m. - 7 p.m.

www.mvpd.gov



mtviewpd